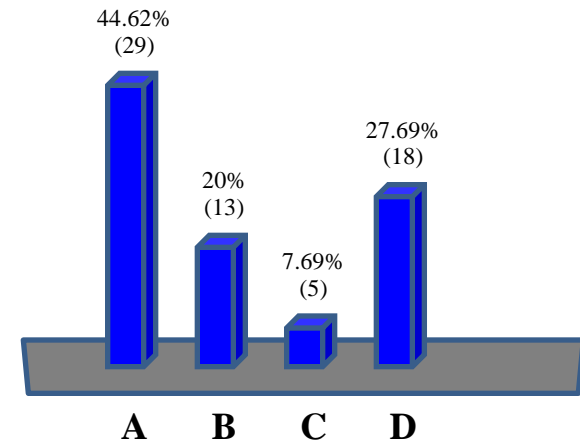


# **Plenary I**

**Blue economy as a template  
for Sustainable Development**

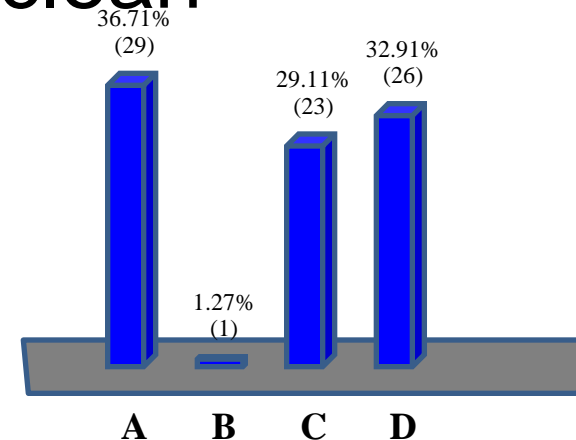
# Q1. Is blue economy more relevant than green economy for islands and coastal regions?

- A. Yes
- B. No
- C. Not sure
- D. Aren't they the same?



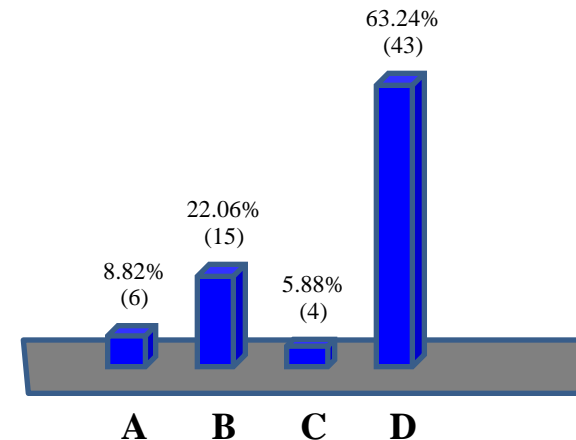
## Q2. Blue economy will Impact most?

- A. Large maritime businesses and international trade
- B. Expanding a strong military control
- C. Local businesses and fishermen
- D. Open a way for large scaled clean resources



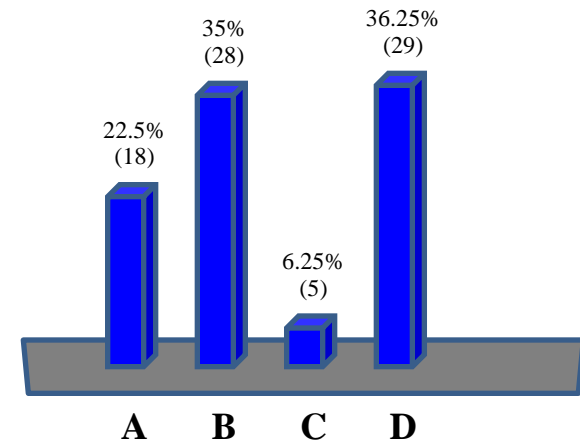
### Q3. What according to you is the biggest threat to the blue economy?

- A. Accidents impacting the environment  
(e.g. Oil spills)
- B. Illegal fishing and trade practices
- C. Stringent laws and regulations
- D. Unsustainable practices



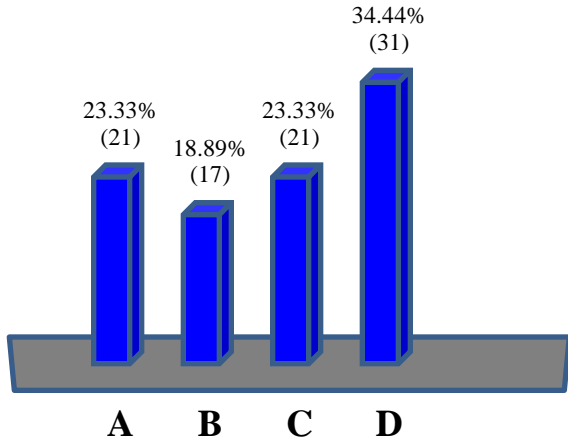
# Q1. What is the biggest challenge for sustainable businesses in PICs?

- A. Lack of skills
- B. Lack of policy support
- C. Lack of ideas
- D. Market constraints



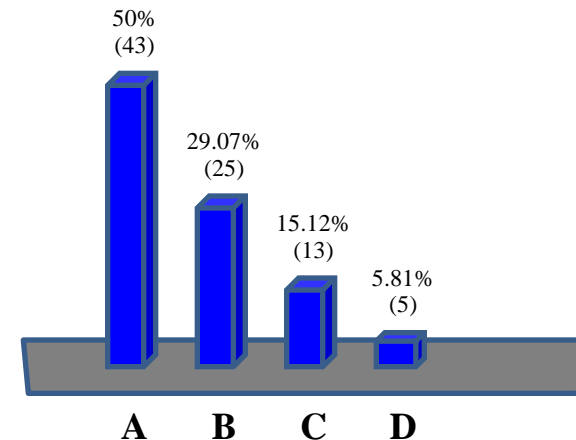
## Q2. Renewable energy markets suffer the most due to:

- A. Their small scale compared to conventional energy markets
- B. Heavy transmission cost
- C. Lack of technology
- D. Institutional barriers



### Q3. Which is the most viable and lucrative area for private sector sustainable business in PICs?

- A. Infrastructure development
- B. Energy sector
- C. Health sector
- D. Education sector



# **Plenary II**

## **Addressing the NDC Implementation Challenge**



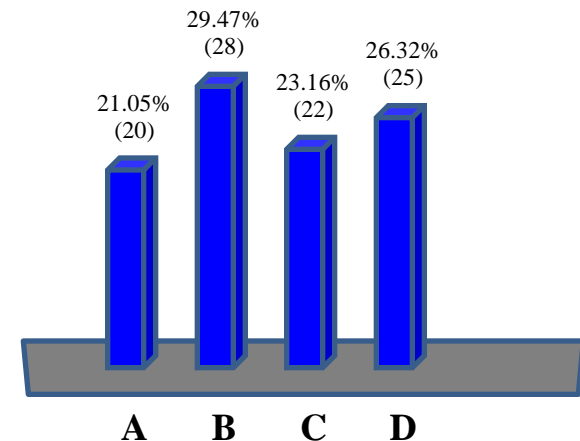
**Q1. With respect to the next steps of developing countries in the area of NDCs, which one is more relevant?**

A. Building awareness/ownership

B. Strengthening monitoring, reporting and verification systems

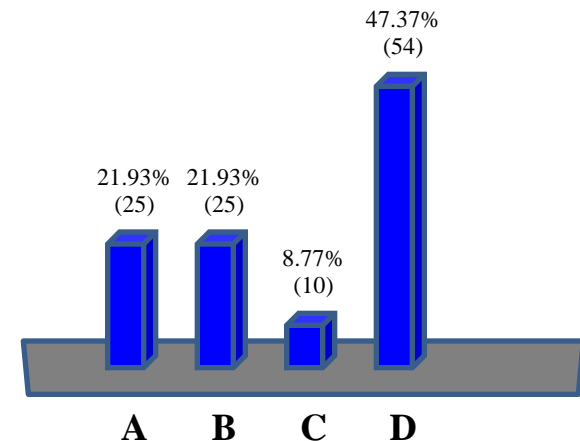
C. Implementation plan

D. Resource mobilization



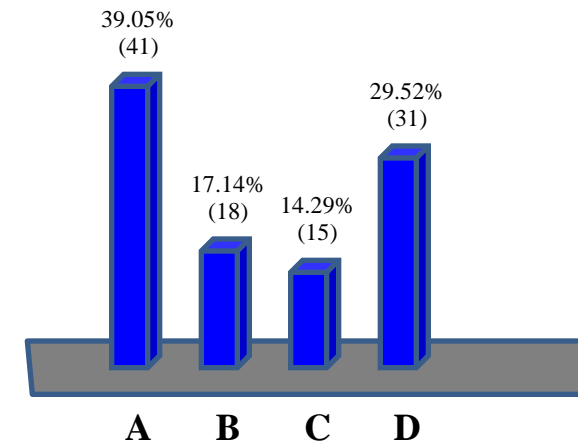
## Q2. What area is most often neglected under big implementation plans?

- A. Smallholders and small businesses
- B. Local circumstances
- C. Gender related issues
- D. Governance at the grass root level



### Q3. Which one of the following is most needed to improve implementation of the NDCs?

- A. Training and upskilling of teams
- B. Mandates and legal framework
- C. Institutions and collaborations
- D. Stakeholders and industry cooperation

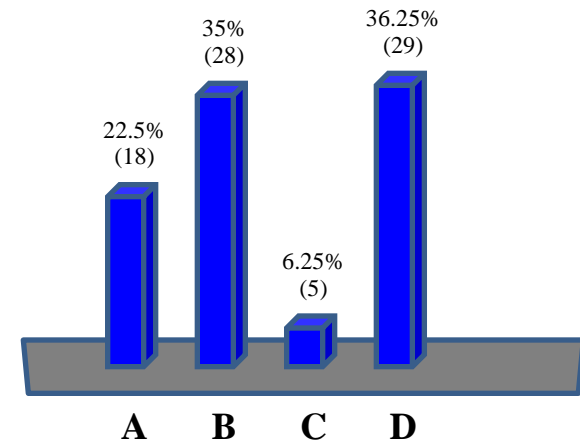


# **Plenary III**

## **Transitioning towards Sustainable Business in the PICs**

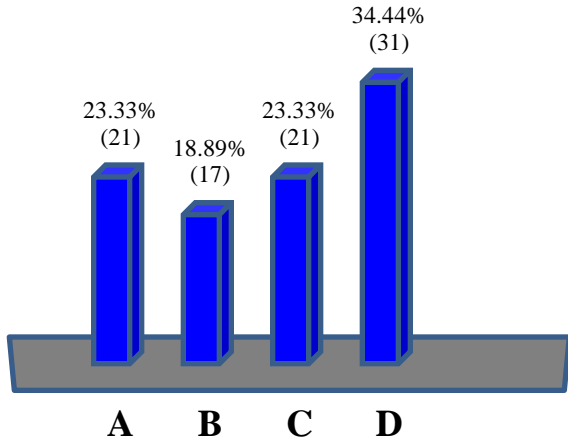
# Q1. What is the biggest challenge for sustainable businesses in PICs?

- A. Lack of skills
- B. Lack of policy support
- C. Lack of ideas
- D. Market constraints



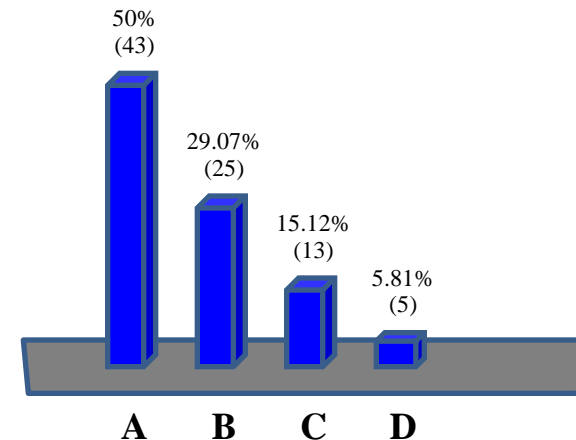
## Q2. Renewable energy markets suffer the most due to:

- A. Their small scale compared to conventional energy markets
- B. Heavy transmission cost
- C. Lack of technology
- D. Institutional barriers



### Q3. Which is the most viable and lucrative area for private sector sustainable business in PICs?

- A. Infrastructure development
- B. Energy sector
- C. Health sector
- D. Education sector



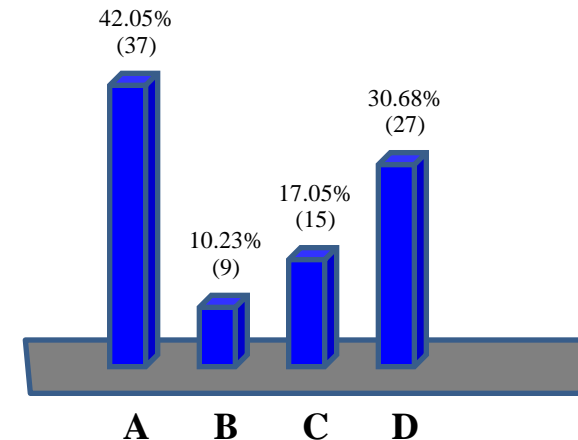
# **Plenary IV**

## **Role of Innovative Financing Mechanisms**



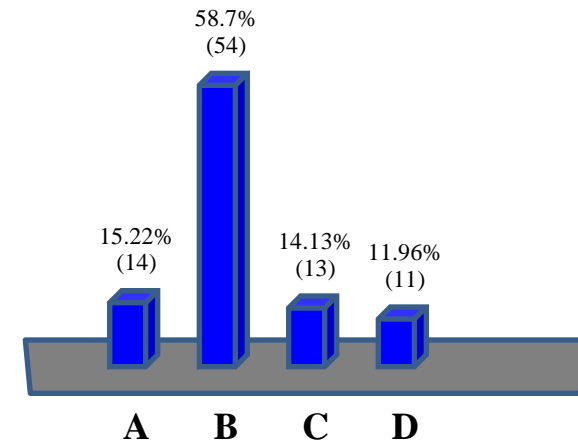
# Q1. Who can best leverage innovative financing mechanisms?

- A. National governments
- B. Non-government organizations
- C. International development organizations
- D. Private sector and corporates



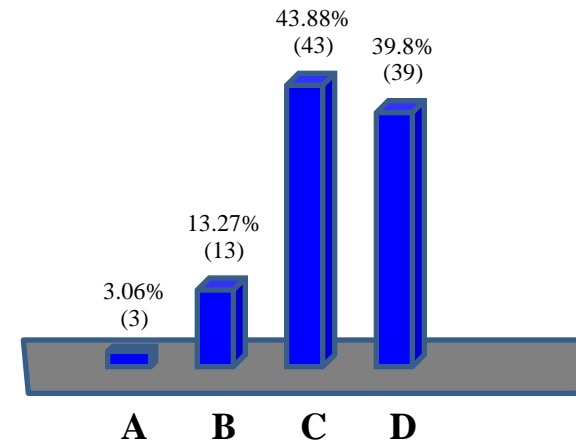
**Q2. Which one of the following can most effectively be leveraged for financing sustainable development?**

- A. Bonds
- B. Market based mechanisms
- C. Voluntary contributions
- D. New taxes and charges



### Q3. Possible constraints to innovative financing mechanisms are:

- A. Lack of demand
- B. Lack of supply
- C. High perceived risks
- D. Constraining laws and regulations

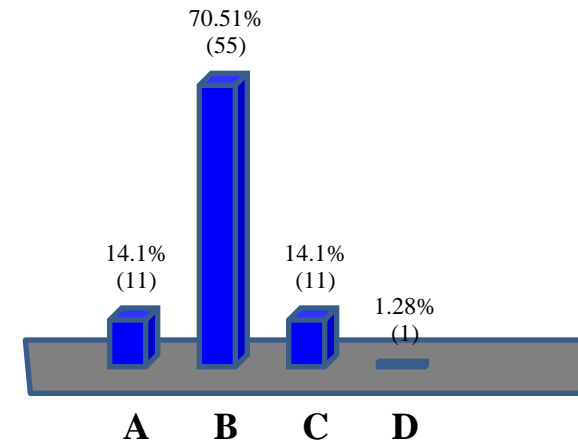


# **Plenary V**

## **A roadmap for Disaster Risk Reduction in Pacific Islands Countries**

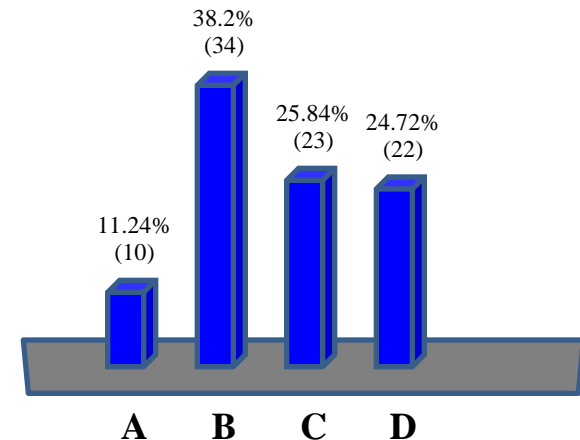
# Q1. Which one of these disaster impact you the most ?

- A. Extreme Heat
- B. Tsunamis and cyclones
- C. Draught/Water shortage
- D. Earthquake



## Q2. Which plays the most crucial role in Disaster Management?

- A. Technology
- B. Community Awareness
- C. National Policies for Disaster Management
- D. Budget and implementation plan



### Q3. Which one is the biggest challenge for Disaster Management?

- A. Budget allocation
- B. Coordination between Disaster Management teams and Govt. agencies
- C. Inconsistent interventions
- D. Lack of political will

